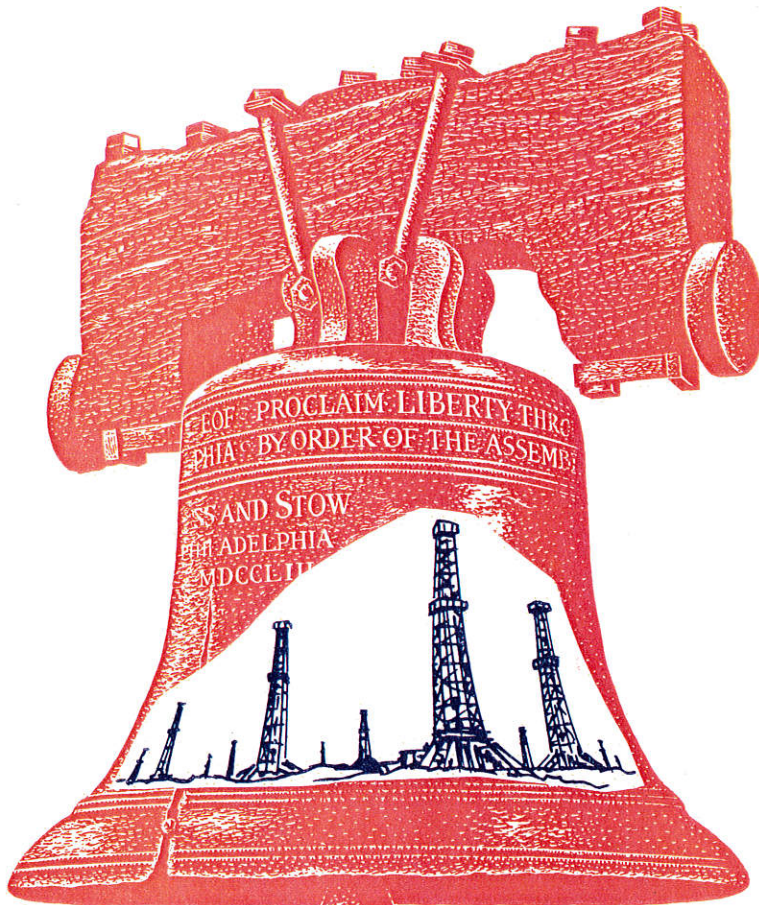


Houston Geological Society ★ Lafayette Geological Society ★ Austin Geological Society



Spirit of '76

ENERGY INDEPENDENCE

**Gulf Coast Association of Geological Societies
26th Annual Meeting**

Shreveport, Louisiana October 13, 14, 15, 1976

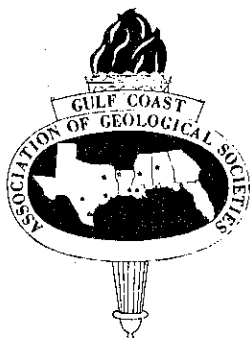
South Texas Geological Society ★ Southeastern Geological Society

Alabama Geological Society ★ Corpus Christi Geological Society ★ East Texas Geological Society ★

Mississippi Geological Society ★ New Orleans Geological Society ★ Shreveport Geological Society

**TRANSACTIONS
GULF COAST ASSOCIATION OF GEOLOGICAL SOCIETIES**

A SECTION OF THE AMERICAN ASSOCIATION OF PETROLEUM GEOLOGISTS



VOLUME XXVI, 1976

Leo A. Herrmann

Editor

PREPARED FOR THE
**Twenty-Sixth Annual Meeting of the
Gulf Coast Association of Geological Societies
AND REGIONAL AAPG MEETING**

HELD IN COOPERATION WITH THE
GULF COAST SECTION OF THE
SOCIETY OF ECONOMIC PALEONTOLOGISTS AND MINERALOGISTS

JACK M. BALDERAS, JR.

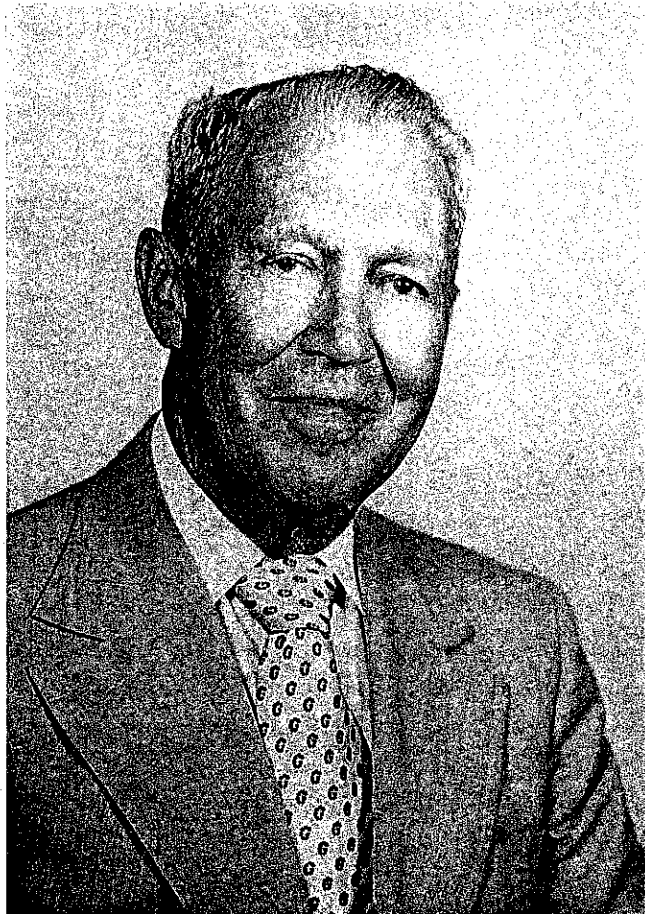
SEPM Editor

**OCTOBER 13, 14, 15, 1976
SHREVEPORT, LOUISIANA**

Published at
Houston, Texas

*Copyright 1976 by the Gulf Coast Association of Geological Societies
No reproduction without permission of the President of the GCAGS*

DEDICATION OF THE 1976
GCAGS TRANSACTIONS VOLUME
TO



CLAUDE N. VALERIUS

This Volume Twenty-Six of the *Transactions* of the GCAGS Convention of 1976 is dedicated to Claude N. Valerius, Consulting Geologist of Shreveport, for his life-long dedication to the highest principles of professional geologists, his contributions to the general geological knowledge and his unflagging enthusiasm and support for geological affairs.

Every community where geologists gather to practice their profession has one or more geologists who can always be counted on to support geological projects, represent our profession before the public, or to add time, energy, and resources to a worthy cause. Claude Valerius is just that sort of geologist.

Claude was born in Hoisington, Kansas, the son of M. M. Valerius, one of the founding members of the AAPG. He received his geological education at Missouri School of Mines, at Rolla, where he graduated in 1925. His AAPG membership dates from that same year, beginning more than fifty years of active, participating membership.

Claude followed his profession with various oil companies in West Texas and New Mexico in his early working years, and from 1929 to 1935 he was geologist for the M. M. Valerius Royalty Corporation in Kansas and Oklahoma. He came to the Ark-La-Tex area with the Barnsdall Oil Company as Exploration Manager and led that company in one of the most successful exploration programs in the area. His skillful employment of geology, geophysics, and inspiring leadership of men led to the discovery of such fields as Midway in Arkansas, and Benton and South Sarepta in North Louisiana. Since 1949 he has been operating as consulting geologist and independent operator through the M. M. Valerius Royalty Corporation which he now heads as President and Chairman of the Board.

Claude is the devoted father of three sons and one daughter and the Valerius' home has always been a friendly and happy place for visitors and family alike.

Many men have been successful fathers and oil operators but few have likewise devoted themselves to such unselfish service to their profession on both the local and regional level in the manner that Claude has done. He has served the Shreveport Geological Society in almost every position including that of President. He was honored in 1963 by his election as an Honorary Member of that organization. In addition to his membership in the AAPG, he is also a fellow of the Geological Society of America and a member of AIME.

Concerned about the quality of science education in local schools, Claude organized the Science Education Counsel in Shreveport in 1956 and for several years served as its president.

The GCAGS was first organized while Claude was President of the Shreveport Geological Society and he strongly supported it from the beginning, making some of the original inter-society contacts. He has served that association as committee member, he has authored papers for their sessions and enthusiastically attended almost every annual meeting.

Claude has also authored papers for the AAPG Bulletin, the Society of Exploration Geophysicists, the GCAGS and the Shreveport Geological Society. Each effort employs the most practical approach as typified by a 1952 paper for the GCAGS entitled *How to Secure Exploration on Your Pet Areas Without Drilling*.

Claude Valerius represents the type of geologist with whom we all like to be associated. He understands the subject, his inquiring mind is continually searching for new ideas and he is always ready to undertake a new project to further the geological profession or geological knowledge.

It is with pride that these *Transactions* of the 26th Meeting of the GCAGS are dedicated to Claude N. Valerius.

TABLE OF CONTENTS

	Page
TITLE PAGE	I
DEDICATION TO CLAUDE N. VALERIUS	II
OFFICERS AND EXECUTIVE COMMITTEE, GCAGS	VII
OFFICERS OF MEMBER SOCIETIES, GCAGS	VII
REPORT OF PRESIDENT, GCAGS, C. Lane Sartor	IX
REPORT OF GENERAL CHAIRMAN, Leonard E. Jordan	X
REPORT OF EDITOR, GCAGS, Leo A. Herrmann	XI
ORGANIZATION, TWENTY-SIXTH ANNUAL MEETING	XII
BEST PAPER AWARDS, GCAGS TWENTY-FIFTH ANNUAL MEETING	XIII
PAST OFFICERS AND CONVENTION CHAIRMEN, GCAGS	XVI
OFFICERS AND BUSINESS REPRESENTATIVES, GCS-SEPM	XVII
REPORT OF THE PRESIDENT, GCS-SEPM, James L. Lamb	XVIII
BEST PAPER AWARDS, GCS-SEPM, TWENTY-FIFTH ANNUAL MEETING	XX
CONSTITUTION AND BY-LAWS, GCAGS	XXII
PUBLICATIONS OF GCS-SEPM	XXIV
PUBLICATIONS OF GCAGS	XXV
ADVERTISERS INDEX	355

TECHNICAL PAPERS AND ABSTRACTS GCAGS

INDEPENDENT/MAJOR ROLES IN EXPLORATION FOR OIL AND GAS By J. R. Jackson, Jr.	1
ANCIENT DELTA SYSTEMS IN THE GULF COAST AREA by Don R. Anderson	4
DEPOSITIONAL ENVIRONMENTS AND PETROLEUM POTENTIAL OF THE ASPHALTIC HARTSELLE SANDSTONE IN NORTH ALABAMA by Wendell M. Beavers and Peter A. Boone	10
FOURMILE CREEK AND SPLUNGE FIELDS-BLACK WARRIOR BASIN MONROE COUNTY, MISSISSIPPI by Harry Spooner, Jr.	17
SOUTH SAREPTA (SMACKOVER GRAY SAND) FIELD, BOSSIER & WEBSTER PARISHES, LOUISIANA by Luther F. Ellison and Martin Russo	30
THE WALKER CREEK FIELD: A SMACKOVER DIAGENETIC TRAP by Jack W. Becher and Clyde H. Moore	34

COMBINATION ENTRAPMENT IN THE SMACKOVER FORMATION AT CHALYBEAT SPRINGS FIELD, COLUMBIA COUNTY ARKANSAS (Abstract) by J. D. Robinson and A. R. Troell	57
CORRELATIONS AND STRATIGRAPHY FROM THE BASE OF THE PINE ISLAND TO THE BASE OF THE NORPHLET IN THE ARK-LA-TEX (Abstract) by James M. Forgotson and James M. Forgotson, Jr.	58
PRE-FERRY LAKE LOWER CRETACEOUS DELTAS OF SOUTH MISSISSIPPI AND PRODUCING TRENDS by Dale Reese	59
GEOPRESSURED GEOTHERMAL PROSPECTS IN THE FRIO FORMATION OF THE TEXAS GULF COAST—IDEAL VS. ACTUAL MODELS (Abstract) by D. G. Bebout and R. G. Loucks	64
GEOTHERMAL EXPLORATION FROM DEEP-WELL DATA by William F. Tanner	65
SIX PROPOSED FORMATIONS IN THE UNDEFINED PORTION OF THE LOWER CRETACEOUS SECTION IN SOUTH FLORIDA by George O. Winston	69
SUNOCO FELDA AND WEST SUNOCO FELDA FIELDS, HENDRY, COLLIER and LEE COUNTIES FLORIDA (Abstract) by John A. Means	73
RECENT DEVELOPMENTS IN SUNNILAND EXPLORATION OF SOUTH FLORIDA by Robert P. Feitz	74
DOOR POINT: A BURIED VOLCANO IN SOUTHEAST LOUISIANA (Short Note) by Jules Braunstein and Claude E. McMichael	79
NEW SMACKOVER PRODUCTION AT ANAHUAC, N.E. MEXICO (Abstract) by Colin L. Stabler	81
“NEW” OIL FROM OLD FIELDS by James A. Hartman	82
NORTH LOUISIANA SALT DOMES—HOW MANY? (Short Note) by Donald H. Kupfer	92
NORTH LOUISIANA BASIN AND SALT MOVEMENTS (HALOKINETICS) by Donald H. Kupfer, Clifford T. Crowe and John M. Hessenbruch	94
JAMES LIMESTONE IN WINN AND NATCHITOCHE PARISHES, LOUISIANA (Abstract) by Leo A. Herrmann	111
COMPETITION AND THE QUEST FOR OFFSHORE LEASES by C. E. McMichael and R. W. Stephens	112
THE ENVIRONMENT-ENERGY DILEMMA, CHOICES AND CONSEQUENCES by Joseph D. Martinez	118
I'VE GOT A NEW PRODUCER IN SOUTH LOUISIANA—NOW WHAT? by Frank W. Harrison	125
EVALUATION OF QUALITY AND QUANTITY CONTROLS ON COAL-RESOURCE ASSESSMENT AND UTILIZATION by J. H. Medlin, S. L. Coleman, G. H. Wood, Jr., and K. J. Englund	128
GEOLOGIC EVOLUTION OF THE MID-CONTINENT AND GULF COAST AREAS— A PLATE TECTONICS VIEW by William J. Burgess	132

TECHNICAL PAPERS AND ABSTRACTS

Gulf Coast Section of SEPM

MID-EOCENE PLANKTONIC CORRELATIONS: NORTHERN ITALY-JAMAICA, B. W. I. by Sherwood W. Wise, Jr. & Richard E. Constans	144
--	-----

FISSION-TRACK AGE OF PLIOCENE VOLCANIC GLASS FROM THE GULF OF MEXICO by J. H. Beard, John Boellstorff, L. C. Menconi, and G. R. Stude	156
DIAGNOSTIC CENTRAL GULF COAST VICKSBURGIAN OSTRACODE by H. J. Howe	164
NANNOFOSSIL BIOSTRATIGRAPHY OF THE BOSSIER SHALE AND THE JURASSIC-CRETACEOUS BOUNDARY by W. W. Cooper and B. L. Shaffer	178
BIOSTRATIGRAPHY AND ECOSTRATIGRAPHY OF THE PLEISTOCENE BASIN TEXAS-LOUISIANA CONTINENTAL SHELF by C. Wylie Poag and Page C. Valentine	185
A LOWER CRETACEOUS SHELF MARGIN IN NORTHERN MEXICO AND SOUTH TEXAS (Abstract) by J. L. Wilson & G. Piali	257
PALEOENVIRONMENTAL ANALYSIS OF THE BIG ESCAMBIA CREEK-JAY- BLACKJACK FIELD AREA by R. J. Sigsby	258
INTERPRETATION OF UNENHANCED LANDSAT IMAGERY FOR WETLAND AND LAND USE DELINEATION IN THE TEXAS COASTAL ZONE by Robert J. Finley	279
CLAY SEDIMENTATION IN THE PEARL RIVER DELTA by J. O. Snowden and G. M. Forsthoff	298
CLAY MINERALOGY OF SEDIMENT ON THE LOUISIANA CONTINENTAL SHELF by R. A. Brooks, R. E. Ferrel and G. K. Billings	305
DENSITY-FLOW ORIGIN FOR FRIO RESERVOIR SANDSTONES, NINE MILE POINT FIELD, ARANSAS COUNTY, TEXAS by Robert R. Berg and Raina R. Powell	310
INTERPRETATION OF COTTON VALLEY DEPOSITIONAL ENVIRONMENT FROM CORE STUDY, FRIERSON FIELD, LOUISIANA by Stephen A. Sonnenberg	320
MULTIVARIATE MINERAL ANALYSIS OF MIOCENE-PLIOCENE COASTAL PLAIN SEDIMENTS by Wayne C. Isphording	326
LEACHED POROSITY IN OVERPRESSURED SANDSTONE—FRIO (Abstract) by S. Lindquist	332
FORM AND COMPOSITION OF THE MISSISSIPPIAN FAN by Charles J. Stuart and Charles A. Caughey	333
ORGANIC DIAGENESIS - IT'S RELATIONSHIP TO GULF COAST OIL (Abstract) by W. E. Harrison	344
OIL PROSPECTS IN THE GULF OF MEXICO REGION by W. F. Tanner	345
THE OIL INDUSTRY AND COASTAL ZONE MANAGEMENT IN LOUISIANA by J. R. Van Lopik	349
SEASONAL ANALYSIS OF BEACH SEDIMENTATION ON THE SOUTH TEXAS COAST by Richard A. Davis, Jr.	354

GULF COAST ASSOCIATION OF GEOLOGICAL SOCIETIES

PRESIDENT C. Lane Sartor
 Wheless Industries, Inc., Shreveport, Louisiana

VICE PRESIDENT Robert E. Boyer
 University of Texas, Austin, Texas

SECRETARY John T. Palmer
 Independent, Shreveport, Louisiana

TREASURER Charles E. Brown
 Bayou State Oil Company, Shreveport, Louisiana

PAST PRESIDENT William H. Moore
 Mississippi Geological Survey, Jackson, Mississippi

EXECUTIVE COMMITTEE

ALABAMA GEOLOGICAL SOCIETY Douglas E. Jones, University of Alabama

AUSTIN GEOLOGICAL SOCIETY E. G. Wermund, Texas Bureau of Economic Geology

CORPUS CHRISTI GEOLOGICAL SOCIETY William A. Atlee, Consultant

EAST TEXAS GEOLOGICAL SOCIETY James Eubank, Delta Drilling Company

HOUSTON GEOLOGICAL SOCIETY Benjamin J. Sorrell, Superior Oil Company

LAFAYETTE GEOLOGICAL SOCIETY Tom L. Caskey, Texas Pacific Oil Company

MISSISSIPPI GEOLOGICAL SOCIETY Emil Monsour, Consultant

NEW ORLEANS GEOLOGICAL SOCIETY Raymond W. Stephens, University of New Orleans

SHREVEPORT GEOLOGICAL SOCIETY James B. Harris, Midroc Oil Company

SOUTHEASTERN GEOLOGICAL SOCIETY Ralph G. Stevenson, University of South Florida

SOUTH TEXAS GEOLOGICAL SOCIETY Wilford Stapp, Stapp Drilling Company

OFFICERS OF MEMBER SOCIETIES GULF COAST ASSOCIATION OF GEOLOGICAL SOCIETIES

ALABAMA GEOLOGICAL SOCIETY, P. O. Box 6184, University, Alabama 35486

PRESIDENT Stephen H. Stow, University of Alabama, Tuscaloosa

VICE PRESIDENT Peter A. Boone, Geological Survey of Alabama

SECRETARY Michael Nielson, University of Alabama, Birmingham

TREASURER George Swindle, Geological Survey of Alabama

AUSTIN GEOLOGICAL SOCIETY, P. O. Box 1302, Austin, Texas 78767

PRESIDENT Charles G. Groat, Bureau of Economic Geology

VICE PRESIDENT Sergio Garza, U. S. Geological Survey

SECRETARY Robert A. Sheldon, Consultant

TREASURER Fred Osborne, Jr., Texas Water Development Board

CORPUS CHRISTI GEOLOGICAL SOCIETY, P. O. Box 1068, Corpus Christi, Texas 78403
 PRESIDENT Ralf Andrews, Independent
 FIRST VICE PRESIDENT Robert Travis, Independent
 SECOND VICE PRESIDENT George Fegan, Coastal States Petroleum
 SECRETARY Robert W. Maxwell, Jr., Harkins and Company
 TREASURER Carroll Pitzer, Independent

EAST TEXAS GEOLOGICAL SOCIETY, P. O. Box 216, Tyler, Texas 75701
 PRESIDENT James Eubank, Delta Drilling Company
 VICE PRESIDENT Bernard H. Ward, Consultant
 SECRETARY-TREASURER Wayne C. Bostik, Exxon Company, U.S.A.

HOUSTON GEOLOGICAL SOCIETY, 234 Esperson Building, Houston, Texas 77002
 PRESIDENT Hal H. Bybee, Continental Oil Company
 FIRST VICE PRESIDENT Royce E. Schneider, Superior Oil Company
 SECOND VICE PRESIDENT Dean Grafton, Cities Service Company
 SECRETARY Jeffery V. Morris, Transcontinental Gas Pipeline
 TREASURER M. M. Osborne, Trunkline Gas Company

LAFAYETTE GEOLOGICAL SOCIETY, P. O. Box 51896, Lafayette, Louisiana 70501
 PRESIDENT Thomas Caskey, Texas Pacific Oil Company
 FIRST VICE PRESIDENT Harry Mathy, Consultant
 SECOND VICE PRESIDENT Philip Martin, Pritchett & Dykes
 SECRETARY Marvin Martin, Patrick Petroleum Company
 TREASURER Francis Broussard, Atlantic Richfield Company

MISSISSIPPI GEOLOGICAL SOCIETY, P. O. Box 422, Jackson, Mississippi 39205
 PRESIDENT David Cate, First Mississippi Corp.
 FIRST VICE PRESIDENT Sarah C. Childress, Mississippi Geological Survey
 SECOND VICE PRESIDENT Lester Aultman, Pruett & Hughes Co.
 SECRETARY Edwin E. Luper, Mississippi Geological Survey
 TREASURER Ray Lewand, Forest Oil Corp.

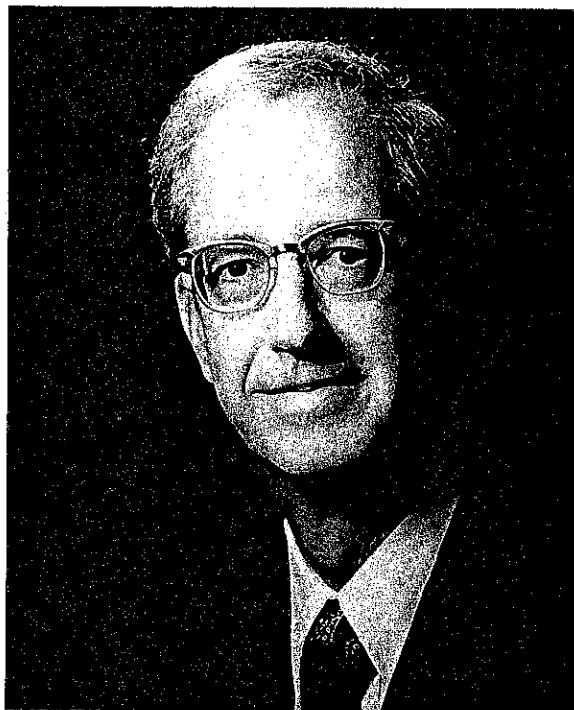
NEW ORLEANS GEOLOGICAL SOCIETY, P. O. Box 52172, New Orleans, Louisiana 70152
 PRESIDENT Peter G. Gray, Stone Oil Corp.
 FIRST VICE PRESIDENT Claude E. McMichael, Shell Oil Company
 SECOND VICE PRESIDENT James A. Hartman, Shell Oil Company
 SECRETARY Robert W. Sabate, Koch Exploration Co.
 TREASURER Charles J. Corona, Davis Oil Company

SHREVEPORT GEOLOGICAL SOCIETY, P. O. Box 750, Shreveport, Louisiana 71162
 PRESIDENT J. Frank Harrell, Oakland Corporation
 FIRST VICE PRESIDENT H. N. Kinney Brookings, Brookings, Waddle & Assoc.
 SECOND VICE PRESIDENT Jerry D. Alagood, Alagood & Alagood
 SECRETARY Robert E. Daigle, Harry Jarred & Associates
 TREASURER Robert L. Williamson, A. J. Hodges Industries

SOUTHEASTERN GEOLOGICAL SOCIETY, P. O. Box 1634, Tallahassee, Florida 32302
 PRESIDENT Dr. Ralph Stevenson, University of South Florida
 VICE PRESIDENT Peter Macgill, Florida Bureau of Geology
 SECRETARY-TREASURER Thomas Scott, Florida Bureau of Geology

SOUTH TEXAS GEOLOGICAL SOCIETY, B-100 Petroleum Center, San Antonio, Texas 78209
 PRESIDENT Richard H. Sams, Independent
 VICE PRESIDENT Dr. Edward C. Roy, Trinity University
 SECRETARY Don A. Urbanec, Independent
 TREASURER George L. Long, Independent

REPORT OF THE PRESIDENT
GULF COAST ASSOCIATION OF GEOLOGICAL SOCIETIES



“Energy Independence”—we believe it is a timely theme for the Annual Meeting of the GCAGS during our country’s Bicentennial year. Just as our country’s founders faced a difficult goal in 1776 we likewise face a difficult one in 1976. We feel certain that the geologists of the Gulf Coast area will play an important part in the drive to attain our goal of energy self-sufficiency in the United States.

The Executive Committee is pleased to report that the GCAGS begins its second quarter century with a good financial position. Our assets, including publications inventory, remain near \$100,000 and the portion not being used to fund the Annual Meeting is invested, pending use on special projects.

A Long-Range Project Committee has been established with the purpose of considering continuing projects to be undertaken by the GCAGS and funded from monies not needed for annual meetings and publication purposes.

The Executive Committee has established a *Student Paper Competition* to be held in each of the local society areas and the award-winning student paper will be presented at the Annual Meeting.

Shreveport, the 1976 Host Society, under the able leadership of General Chairman Leonard Jordan has planned another exciting and busy meeting. Program Chairman Arthur Trowbridge received a good response to his call for papers and a full technical program should occupy the time of all in attendance.

It has been a pleasure to serve as President of the GCAGS for the past year and my thanks go to the members of the Executive Committee for their ready response to calls for action. The Executive Committee especially thanks all those seemingly tireless committee chairmen who have worked so hard to publish the *Transactions* and to plan and execute all the details of a large meeting.

Welcome to Shreveport! We hope you will enjoy being in our city and that you will find our meeting informative and your visit entertaining.

C. Lane Sartor
President
Gulf Coast Association of Geological Societies

REPORT OF THE GENERAL CHAIRMAN
TWENTY-SIXTH ANNUAL MEETING - 1976



Association with such a fine group of Committee Chairmen during the past two years gives me confidence to predict that the 26th Annual Convention of the GCAGS will be very successful and one in which we can all be proud. My job of General Chairman, while most rewarding and interesting, has been made easy by the dedicated efforts of all the Convention Committees. In addition to these committees, I want to express my appreciation to Lane Sartor, President of GCAGS, and the officers and representatives of GCAGS for their help and advice in planning the convention. I also want to thank the Shreveport Geological Society, Shreveport Geological Auxiliary, and Desk and Derrick Club of Shreveport for their efforts in the convention's success.

GCAGS Conventions have been successful since 1951 and we have endeavored to follow the pattern and style set by these previous conventions. Our theme "Spirit of '76 - Energy Independence" does expound a far-reaching goal, but we know that the petroleum geologists registered at this convention form the nucleus of an industry that is responsible for alleviating our Nation's energy shortage. It is the purpose of this convention to provide an arena for presentation of technical papers, a permanent record of these papers in the GCAGS *Transactions*, and friendly fellowship which we hope, in some way, may aid you in this energy search.

Leonard E. Jordan
General Chairman

REPORT OF THE TRANSACTIONS EDITOR

When Leonard Jordan asked me to be the editor of volume 26 of the *Transactions* I was honored, and in a moment of weakness I accepted the responsibility. My early apprehensions abated when the pieces started fitting together and the result is, I hope, a volume befitting the lofty GCAGS tradition.

The *Transactions* occupy a very special place in the records of Gulf Coast geology. The 26 volumes serve, along with Murray's monumental *Geology of the Atlantic and Gulf Coastal Province of North America*, as the premier sources of geological information on this tremendously important region. No one knows this better than professors who, like myself, teach courses on the stratigraphy and structure of the Gulf Coastal Province.

The papers in this volume cover a wide spectrum of topics, and without the aid of a very cooperative editorial committee I would have been unable to give many of the papers proper scrutiny. I am particularly indebted to Jack Balderas who served as the capable editor of the SEPM papers in this volume. Others who deserve special mention are Leonard Jordan, Program Chairman; Jim Black, Vice-Chairman; Art Trowbridge, Program Chairman; and Gene Sigler, Printing Chairman. They have all come to my aid on many occasions. I would also like to express my thanks to Gary Armstrong and John Ware of D. Armstrong Company, Inc., for their excellent cooperation during the printing of this volume.

It would be a grave omission not to mention the authors, without whom there would be no volume. I am indebted to them all for their understanding and forgiveness for any transgressions I may have committed in editing their papers. Because of the short time interval between receiving manuscripts and the deadline for submittal of manuscripts to the printer it was not possible to return galley and page proofs for authors' corrections. For this reason there are undoubtedly some errors, but I hope we have kept them to a minimum.

Lesen Sie dieses Buch mit Freude!

Leo A. Herrmann
1976 Transactions Editor

ORGANIZATION

TWENTY-SIXTH ANNUAL MEETING

LEONARD E. JORDAN—GENERAL CHAIRMAN
JAMES C. BLACK—VICE GENERAL CHAIRMAN

Arrangements Committee

C. C. Burgess, Arkansas Louisiana Gas Company,
Chairman
B. F. Anderson, Louisiana State Conservation Dept.
R. R. Faust, Arkansas Louisiana Gas Company

Advertising Committee

Georgiana Ashford, Burk, Bakwin & Henry, Chair-
woman
Thelma Webb, Burk, Bakwin & Henry
V. J. Quinn, Schlumberger
Jim Christian, Schlumberger
Pam Case, McCormick Oil & Gas

Awards Committee

Michael L. Kidde, Munoco, Chairman
Jerry Dean Alagood, Independent
Harris G. Clark, Jr., Placid Oil Company

Editorial Committee

Dr. Leo A. Herrmann, Louisiana Tech University,
Editor
Prentis L. Boatner, Jr., Crown Zellerbach
H. N. Kinney Brookings, Brookings, Moffatt, & Waddle
Lawrence A. Goebel, Independent
Joseph O. Laird, T. L. James Co., Inc.
Patrick N. Mason, Engineered Property Management
Phillip R. Reeves, Pruet & Hughes Co.
Claude N. Valerius, Independent
Lloyd O. Waldron, Jr., CSC/IMC Exploration
Donald R. Worden, Olinkraft, Inc.

Entertainment Committee

Jim B. Harris, Midroc Oil Company, Chairman
A. G. Murphy, Arkansas Louisiana Gas Co.
Thomas J. Adair, Independent
George R. Alewyne, III, Crow Drilling Company
A. Phil Foster, Independent

Exhibits Committee

Percy J. Wheeler, Jones-O'Brien, Inc., Chairman
Ray T. Jenkins, Schurman Oil & Gas Company
Charles S. Cook, Jones-O'Brien, Inc.
Terry Antee, Jones-O'Brien, Inc.

Field Trip Committee

Max G. Hare, Arkansas Louisiana Gas Company,
Chairman
Robert H. Langton, Roberts and Murphy, Inc.
Charles S. Cook, Jones-O'Brien, Inc.
Robert E. Daigle, Harry Jarred & Associates
David R. Carroll, Independent
Jerry Dean Alagood, Independent
Floyd W. Mock, Arkansas Louisiana Gas Company

Golf & Tennis Committee

Ferrell L. Burgess, Pennzoil Producing Company,
Chairman
V. J. Quinn, Schlumberger
Jerry Blaker, Schlumberger
James Gregg Lea, Independent

Housing Committee

George L. Herrell, Lyons Petroleum, Inc., Chairman
Roland C. Smith, Independent
Stuart James Pike, Independent

Ladies Activities Committee

Mrs. Nolan G. Shaw, Chairwoman
Mrs. Leonard E. Jordon
Mrs. David R. Carroll
Mrs. Tommy N. Vague
Mrs. Thomas J. Adair
Mrs. James C. Roberts
Mrs. J. C. Byrd
Mrs. Jerry Dean Alagood
Mrs. Prentis L. Boatner, Jr.
Mrs. M. F. Shelton, Jr.

Printing Committee

Gene C. Sigler, Fortune Oil & Gas Company, Chairman

Program Committee

Arthur H. Trowbridge, Independent, Chairman
C. Ray Scurlock, Independent
Dr. Nolan G. Shaw, Centenary College

Publicity Committee

Dudley R. Meier, Independent, Chairman
Bill Fisher, Shreveport Times
Erwin W. Saye, Independent

Registration Committee

B. Ross White, Placid Oil Company, Chairman
Prentis L. Boatner, Jr., Crown Zellerbach
Leroy Foll, Independent
L. Lee Kincade, Jr., Independent

Speaker Assistance Committee

Frank D. Graves, Little Wolf, Inc., Chairman
Donald E. Gednetz, Independent

Transportation Committee

Donald P. Duncan, Jr., Dresser Atlas, Chairman
Lloyd T. Naylor, Naylor-Hayes, Inc.

SEPM Committee

Dr. Nolan G. Shaw, Centenary College, Chairman
Dr. Daniel Tucker, Centenary College

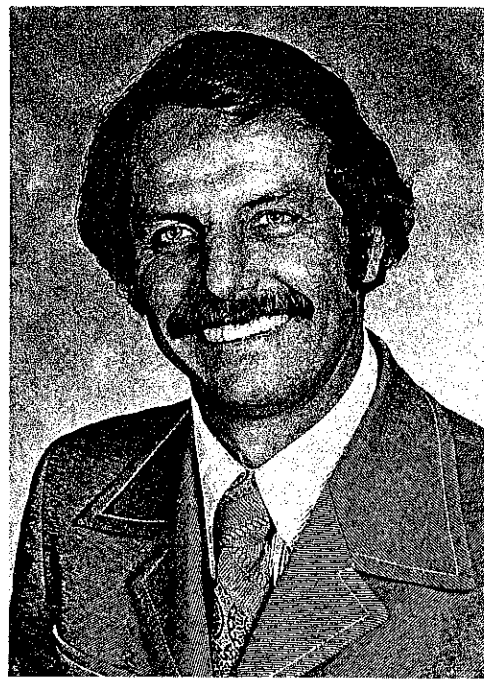
GULF COAST ASSOCIATION OF GEOLOGICAL SOCIETIES BEST PAPER AWARDS, TWENTY-FIFTH ANNUAL MEETING JACKSON, MISSISSIPPI

The 1975 GCAGS Awards Committee has awarded first, second and third place, together with the A. I. Levorsen Memorial Award, to these authors for their presentations at the 1975 GCAGS Jackson Convention:

First place was awarded to Warren L. Seal and J. A. Gilreath for their paper entitled "Vermillion Block 16 Field, Irregular Reservoir Performance."

Warren L. Seal was born in Cleveland, Ohio, on November 16, 1934. He is married and the father of two children. Warren received his B. S. in Petroleum Geology from Mississippi State University in 1956. Upon graduation he was employed by Amoco Production Company. Geological responsibilities involved operational duties in South Louisiana and in Offshore Louisiana. He served as a staff geologist in Houston and New Orleans. Subsequently he assumed the responsibilities of Area Operations Geologist, then Area Exploration Geologist for various locations within the Gulf Coast.

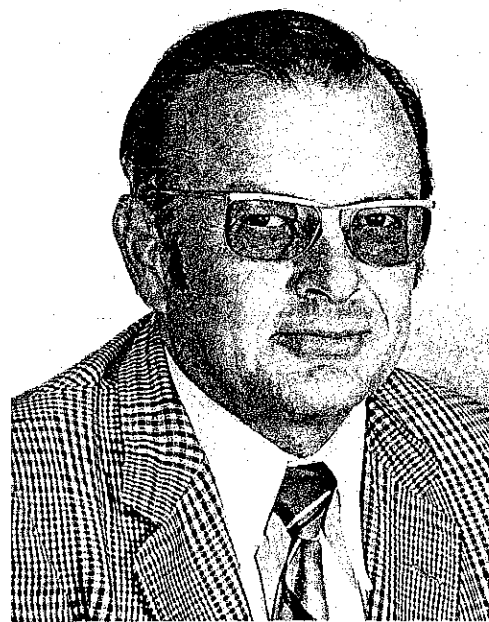
Warren is currently with Exchange Oil & Gas Corporation as a Exploration Geologist. He is a member of the New Orleans Geological Society.



Warren L. Seal

J. A. Gilreath was born in Cartersville, Georgia, and attended both North Georgia College and Georgia Tech. He received the B. S. degree in Electrical Engineering from Georgia Tech in December, 1948, and was employed by Schlumberger, Inc., in 1949. His first assignment was in New Iberia, Louisiana and since that time he has worked as field engineer, district manager, and sales engineer in six other south Louisiana and Mississippi locations. Currently he is Sales Development Engineer for Schlumberger Offshore Services in New Orleans, Louisiana.

Mr. Gilreath is a member of the New Orleans Geological Society, and an associate member of the American Association of Petroleum Geologists. He has authored or co-authored 15 papers and articles (six presented before the GCAGS) on various phases of dipmeter interpretation and usage. He was an AAPG Distinguished Lecturer in 1964.



J. A. Gilreath

The second place award and the A. I. Levenson Award for creative thinking in the field of petroleum geology were presented to John D. Myers for his paper on "The Petroleum Geology of Choctaw County, Alabama." He has previously won the A. I. Levenson and first place best paper awards at the 1968 GCAGS convention.

John is a native of Neshoba County, Mississippi, and received B.S. and M.S. Degrees in Petroleum Geology from Mississippi State University.

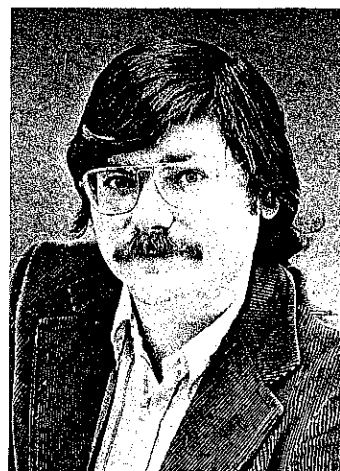
Since 1970, John has worked the Southeastern Jurassic Trend for Placid Oil Company in Jackson, Mississippi. He was a consulting geologist from 1968 to 1970, and from 1956 to 1968 was employed by Phillips 66 in various geological assignments in Louisiana, Texas and Oklahoma.



John D. Myers

The third place award was presented to Bruce P. Baganz, John C. Horne and John C. Ferm for their paper on "Carboniferous and Recent Mississippi Lower Delta Plains: A Comparison."

Bruce Baganz was born in Philadelphia in 1951 and was reared in Wilmington, Delaware. He received his B.A. with Honors from the College of Wooster, Wooster, Ohio in 1973 and his M. S. from the University of South Carolina in 1975. Presently, he is working on his Ph.D. at South Carolina. A member of the American Association of Petroleum Geologists and the Society of Economic Paleontologists and Mineralogists, his research interests include sedimentology and coal geology.



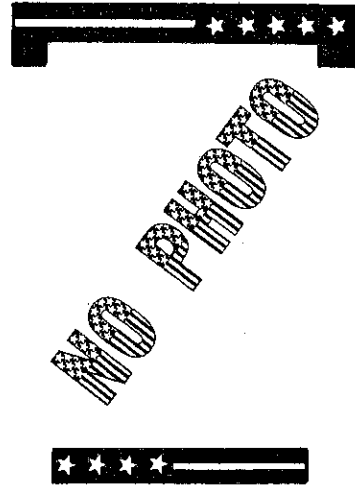
Bruce P. Baganz

John C. Horne was born in McKeesport, Pennsylvania in 1940. He received his B.A. degree in geology from Brown University in 1963 and his M.S. and Ph.D. from the University of Illinois in 1965 and 1968, respectively. After consulting for Pechiney Enterprises and doing post-doctorate work at Louisiana State University, he moved to the University of South Carolina in 1970 where he is at present. In 1972 and 1973, he was associate director of the University of South Carolina's International Program and is presently Associate Director of the Coal Research Program. He is the author of over 15 publications dealing with the geology of coal-bearing rocks.



John C. Horne

John C. Ferm received his B. S. degree in geology in 1946 from Penn State University and his Ph.D. from the same institution in 1957. He has been a geologist with the U.S. Geological Survey, a professor of geology at Louisiana State University and, at present is professor of geology and Director of the Coal Program at the University of South Carolina. He is the author of numerous publications dealing with the geology of coal-bearing rocks.



GULF COAST ASSOCIATION OF GEOLOGICAL SOCIETIES

PAST OFFICERS AND CONVENTION CHAIRMEN

YEAR	HOST SOCIETY	PRES.	V. PRES.	SEC.	TREAS.	CONVENTION CHAIRMAN
1951	New Orleans	L. Bowling		J. S. Spencer		E. J. Nugent
1952	Corpus Christi	W. M. Craddock		W. A. Peterson	E. W. Kimball	
1953	Shreveport	R. T. Wade		F. H. Webster	C. C. Barber	
1954	Houston	W. R. Canada	W. H. Knight	C. W. Holcomb	A. F. Scott	
1955	Biloxi	A. E. Blanton	L. D. Troupe	R. A. Davis	K. C. Anderson	
1956	San Antonio	R. L. Layden	M. W. Beckman	E. T. Musselman	W. H. Wallace, Jr.	
1957	New Orleans	H. N. Hickey	P. Montgomery	J. F. Moss	J. A. Wheller	O. G. Bell
1958	Corpus Christi	E. A. Lohse	R. W. Grayson	W. W. Woolfolk	E. G. Jeffreys	A. E. Blanton
1959	Houston	G. C. Hardin, Jr.	L. Harvey	A. W. Wood	E. L. Ames	L. L. Palmer
1960	Biloxi	M. F. Kirby	D. N. Osburn	H. O. Woodbury	K. Soule	L. H. Meltzer
1961	San Antonio	D. Dassow	E. P. Roth	W. E. Bancroft	R. E. Rogers	H. J. Tyler
1962	New Orleans	T. H. Philpott	J. C. Byrd	R. W. Luker	D. A. Pedrotti	B. F. Dyer
1963	Shreveport	J. C. Byrd	E. Knott	K. C. Harkins, Jr.	J. L. George, Jr.	E. A. Lohse
1964	Corpus Christi	E. Knott	R. E. Fairchild	W. A. Robbins, Jr.	J. S. Schoelen	R. R. Copeland
1965	Houston	R. E. Fairchild	A. M. Borland	M. L. Frazier, Sr.	L. C. Bryant	M. O. Turner
1966	Lafayette	A. M. Borland	J. H. Hensley	L. G. Hughes	E. D. Minihan	L. E. Warren
1967	San Antonio	W. L. Stapp	M. D. Horton	J. W. Yon, Jr.	C. W. Hendry, Jr.	H. S. Puri
1968	Jackson	M. D. Horton	R. O. Vernon	C. E. Brown	B. C. Tucker	J. O. Goffe
1969	Miami	R. O. Vernon	H. J. Tyler	M. L. Dwight	P. G. Gray	R. G. Williamson
1970	Shreveport	H. J. Tyler	L. H. Meltzer	M. H. Oakes	J. E. Melton	J. M. Sides
1971	New Orleans	L. H. Meltzer	D. R. Boyd	M. E. Hole, Jr.	P. W. Cawthon, Jr.	C. E. Harrison
1972	Corpus Christi	D. R. Boyd	F. M. Schall	T. J. Eby, Jr.	J. J. Bellamy	F. W. Harrison, Jr.
1973	Houston	F. M. Schall, Jr.	S. J. Lysinger	W. E. Taylor	H. L. Ladner	C. H. Williams, Jr.
1974	Lafayette	S. J. Lysinger	W. H. Moore	J. T. Palmer	C. E. Brown	L. E. Jordan
1975	Jackson	W. H. Moore	C. L. Sartor			
1976	Shreveport	C. L. Sartor	R. E. Boyer			

**GULF COAST SECTION
SOCIETY OF ECONOMIC
PALEONTOLOGISTS AND MINERALOGISTS**

OFFICERS

President: James L. Lamb, Exxon Production Research Company, P. O. Box 2189, Houston, Texas 77001

Vice-President: Lawrence C. Menconi, Exxon Company, USA, P. O. Box 61812, New Orleans, Louisiana 70161

Secretary: William S. Grubb, Amoco Production Company, P. O. Box 50879, New Orleans, Louisiana 70150

Treasurer: John L. Carney, Paleo-Data, Inc., 6619 Fleur de Lis Drive, New Orleans, Louisiana 70124

Past President: Emmett R. Adams, Shell Oil Company, P. O. Box 60775, New Orleans, Louisiana 70160

Program Chairman: Nolan G. Shaw, Centenary College of Louisiana, Department of Geography and Geology, Shreveport, Louisiana 71104

BUSINESS REPRESENTATIVES

ALABAMA & GEORGIA

Tuscaloosa: C. Everett Brett, The University of Alabama, Natural Resources Center, Office of the Director, Box 6282, University, Alabama 35486

FLORIDA

Tallahassee-Gainesville: Sherwood W. Wise, Department of Geology, Florida State University, Tallahassee, Florida 32303

Tampa-Miami: Edward O'Donnell, Department of Geology, University of South Florida, Tampa, Florida 33620

Miami: William H. Hay, Rosenstiel School of Marine and Atmospheric Science, University of Miami, 4600 Rickenbacker Causeway, Miami, Florida 33149

LOUISIANA

Baton Rouge: Alvin M. Phillips, Jr., School of Geosciences, Louisiana State University, Baton Rouge, Louisiana 70803

Lafayette: Pat G. Hawkins, Union Oil Company of California, Box 51388, OCS Lafayette, Louisiana 70501

New Orleans: George C. Esker III, Texaco, Inc., P. O. Box 60252, New Orleans, Louisiana 70160

MISSISSIPPI

State College: Ernest E. Russell, Department of Geology and Geography, Mississippi State University, State College, Mississippi 39762

TEXAS

Austin: Earl E. McBride, Department of Geology, University of Texas, Austin, Texas 78712

Beaumont: William R. Pampe, Department of Geology, Lamar University, P. O. Box 10031, LU Station, Beaumont, Texas

College Station: Wayne M. Ahr, Department of Geology, Texas A&M University, College Station, Texas 77843

Dallas: W. T. (Tom) Rothwell, Jr., Independent, 322 Sutton Place, Richardson, Texas 75080

Houston: Richard E. Casey, Department of Geology, Rice University, Houston, Texas 77001

San Antonio: Porter A. Montgomery, Jr., Montgomery's Stratigraphic Service, 1517 Milam Building, San Antonio, Texas 78205

REPORT OF THE PRESIDENT GULF COAST SECTION—SOCIETY OF ECONOMIC PALEONTOLOGISTS AND MINERALOGISTS

A glance through past issues of the *Transactions* indicates, clearly, changes in the subject matter of SEPM papers over the years. Once popular themes of general stratigraphy, biostratigraphy, and faunal description have gradually changed to more interpretive subjects. This is not to say that all stratigraphic and biostratigraphic problems have been resolved, but it does indicate that we, as a society, are progressing in our science by applying both old and new-found knowledge to geologic problems in the search for oil.

As oil prospecting moved offshore in the early '60s, stratigraphic correlation became more difficult owing to the common occurrence of rather pronounced changes in facies from shallow to deep. This factor helped stimulate increased interest in paleoecology as a tool for interpreting ancient depositional environments. Thus, by 1966 the annual meeting in Lafayette was noticeably dominated by papers stressing both ecology and paleoecology as exploration tools. Paleoecologic data were seen to be useful in defining and resolving many geologic problems, such as preparation of facies maps for discrete time intervals, predicting faults and stratigraphic traps, and delineating producing trends of a stratigraphic nature. Many a well has been suspended from drilling when paleontologists determined drilling was in deep-water shales.

The large number of papers concerned with sedimentary petrology during recent years also speaks well for advances in clastic and carbonate research. Knowledge of modern depositional sedimentary environments within the Gulf Coast region now can be applied scientifically to facilitate and improve our understanding of ancient environments. Nearly every Gulf Coast geologist is familiar with the various kinds of sedimentary structures produced by current or wave action in paralic and offshore environments, and he likely uses this knowledge frequently in his geologic predictions.

A rewarding secondary benefit of these advanced environmental studies is provided geologists who have discovered that paleoenvironments are often predictable from the electric-log characters, once these have been determined from control sections by other physical and/or biological means. All this, of course, points to the very real need for close cooperation between the different scientific disciplines in our increasing common search for future energy needs. Common practice now is to include paleoenvironmental considerations in nearly all geological reports. This speaks well for the accomplishments of our society during the last decade or so.

The current trend in subject matter, leading to increasingly refined paleoenvironmental predictions, seemingly will continue through future meetings. Indeed, this should be encouraged. So critical is knowledge in this area to refined geologic evaluation that our society plans a special session devoted to the application of paleoecological procedures in the Gulf Coast region at the annual meeting in New Orleans in 1978. I am confident that this session will be yet another milestone in the accomplishments of our society; perhaps equally important should be the opportunity also for increased recognition of the significance of our efforts on the part of our many colleagues more directly concerned with petroleum exploration.

As spokesman for the GCS-SEPM membership, I would like to acknowledge the fine work of all the officials that have made this meeting possible, especially those I have been privileged to work closely with during the year: Lawrence C. Menconi, Vice-president; William S. Grubb, Secretary; John L. Carney, Treasurer; Nolan G. Shaw, Program Chairman; and Jack M. Balderas, Jr., Editor. Our past president Emmett R. Adams has been very helpful in guiding me through my difficulties during the year, and Richard P. Zingula has done a remarkable job as our Publications Manager by breaking records in salesmanship.

We are indeed privileged to have Dr. H. V. Andersen of L.S.U. lead us on a field trip this year to an area in Natchitoches, Louisiana, with which he is most familiar. Dr. Andersen is a past president and honorary member of our society and I hear he plans to retire from teaching next year. Good luck Andy.

Our business representatives have been busy in our local chapters planning meetings and collecting items for the Newsletter. These people are an active force in our organization and I wish to thank them all for a job well done.

A last-minute announcement from Doris M. Curtis is that the Gulf Coast Section's paper, given at the Semi-Centennial meeting of AAPG-SEPM in New Orleans, was selected to be presented again at the Society of Exploration Geophysicists national meeting in October. Nice work Doris and Ed.

As we move into our third decade of organization, our membership is fast approaching the 500 mark, making it the largest in the country. On a personal note, I would like to say that I have enjoyed serving the society and thank all of you for your support. I have certainly gained an added admiration for the society by working with such a fine group of people.

James L. Lamb
President, GCS-SEPM

**GULF COAST SECTION OF SEPM
BEST PAPERS AWARDS, TWENTY-FIFTH ANNUAL MEETING
JACKSON, MISSISSIPPI**

FIRST PRIZE: To James Lee Wilson, professor of geology, Rice University in Houston, for "Jurassic Grainstones and Types of Carbonate Shelf Cycles." Dr. Wilson attended Rice University and the University of Texas where he received his B.A. and M.A. degrees in 1942 and 1944. He received his Ph.D. from Yale University in 1949. Dr. Wilson's experience includes that of a field geologist in the Rocky Mountains, associate professor at the University of Texas, and from 1952-1966 he was a research geologist for Shell Development Company in Houston. During this period he spent three years in the Netherlands working on the Mesozoic geology of the Middle East. In 1966 Dr. Wilson returned to the academic field of work as a professor at Rice University in the Geology Department. In 1972 he was appointed to the Harry Carothers Chair of Geology, and has been Chairman of the Geology Department since 1974. He has published extensively in Paleozoic paleontology, stratigraphy and sedimentation, and in carbonate geology.



James Lee Wilson

SECOND PRIZE: To Kenneth F. Wantland, research scientist for Cities Service Company in Tulsa, for "Holocene Patch Reef Distribution and Coral Community Ecology, Southern Shelf of Belize." Dr. Wantland received his B.S. degree from the University of Cincinnati in 1960, and his M.A. and Ph.D. degrees from Rice University in 1964 and 1967. He joined Cities Service Company in 1970 and is now Manager of Geological Research and also Adjunct Associate Professor of Earth Sciences at the University of Tulsa. His major interests have been in Holocene and Tertiary foraminiferal distributions and ecology of coral reefs. His interest in the continental shelf of Belize began while he was at Rice working on his doctorate. He led a GCAGS-SEPM field trip to Belize in 1971 and has visited the area many times on company field trips. He is co-editor of AAPG Special Studies in Geology, "The Belize Shelf, Carbonate Sediments, Clastic Sediments and Ecology (1975)."



Kenneth F. Wantland

And to Mark E. York, who is a geologist at Cities Service Company research laboratory in Tulsa. He received his B.S. and M.A. degrees from Tulsa University in 1968 and 1975. From 1968 through 1975 he worked as a research assistant for Cities Service Company in the fields of paleontology and palynology, and also structural geology and carbonate research. He has helped conduct carbonate sediment seminars in Belize, Florida and the Bahamas. His major work interest is in the field of recent carbonate sedimentation and petrography.



Mark E. York

THIRD PRIZE: To Wayne C. Isphording, professor of geology at the University of South Alabama, for "The Physical Geology of Yucatan". Dr. Isphording earned his B.S. and M.S. degrees from the University of Florida, where he majored in Geology and minored in Physics. He took his Ph.D. at Rutgers University in 1964 and since then has been a professor in the geology department at the University of South Alabama in Mobile. His interests include geochemistry and diagenesis of carbonates, tropical soil genesis, and applications of statistical and computer techniques to geological problems. He has done geochemical and mineralogical research on residual soils in the Caribbean region and is now beginning a study of their physical and engineering properties.



Wayne C. Isphording

CONSTITUTION AND BY-LAWS

GULF COAST ASSOCIATION OF GEOLOGICAL SOCIETIES

ARTICLE I — Name

This is a non-profit organization and shall be known as the "Gulf Coast Association of Geological Societies." It is hereinafter referred to as "This Association."

ARTICLE II — Object

The object of This Association is to provide for discussion and publication of papers on subjects and problems coming within the scope of the Geological profession and with particular emphasis on Gulf Coast geology.

ARTICLE III — Organization

This Association is an organization of AAPG-affiliated Geological Societies in the Gulf Coast Area.

SECTION 1.

The business of This Association shall be transacted by an Executive Committee composed of one representative from each member society and the President, Vice President, Secretary, Treasurer, and Past President. The Secretary and Treasurer shall be non-voting members of the Executive Committee. The Vice President, Secretary, and Treasurer shall be elected by the Executive Committee at the annual meeting. The Secretary and Treasurer shall be nominated by the Executive Committee of the local Geological Society next in line to host the annual meeting. The Vice President shall be nominated by the Executive Committee of the host society for the annual meeting two years hence and shall accede to the Presidency. Thus each year the President, Secretary and Treasurer will be from the host society with the Vice President providing continuity with the Executive Committee as he assumes the Presidency in the ensuing year. The duties of these officers shall be those customary to their respective offices.

The GCAGS representative to the Advisory Council of the American Association of Petroleum Geologists shall be selected by the Executive Committee of GCAGS and shall be an ex officio, non-voting member of the GCAGS Executive Committee.

Each member society shall designate a representative to the Executive Committee and in the event the chosen representative cannot attend any given Executive Committee meeting, an alternate representative shall be appointed by the member society to attend and vote in the absence of the representative. The representative, when practicable, shall be an officer or past officer of the society he represents.

Each society shall have one vote on actions taken by the Executive Committee with the exception that the host society, the next annual host society and the immediate past host society will be entitled to two votes by virtue of their members holding the offices of President, Vice President and Past President.

The officers of the Executive Committee shall be elected for a term of one year. They shall be elected and assume their duties as soon after the annual meeting of This Association as is practicable. Any vacancies shall be filled by the Executive Committee as provided above in Paragraph 1.

SECTION 2.

The business of This Association shall be conducted by the Executive Committee. A simple majority vote of the members present at meetings is required to effect decisions, except in those matters which require a greater majority, as set forth in the Constitution and By-Laws.

A quorum shall consist of more than one-half of the voting members of the Executive Committee.

ARTICLE IV — Meetings

SECTION 1.

There shall be an annual meeting of This Association, the time and place of which shall be determined by the Executive Committee.

ARTICLE V — Publications

There shall be an annual *Transactions* published by This Association, which shall contain papers presented at the annual meeting, and such other material as selected by the Executive Committee. The Executive Committee is authorized to have published additional bulletins, and other material which they feel will further the object of This Association.

ARTICLE VI — Funds

The funds of This Association shall be deposited in any national bank or Federally insured Savings and Loan Association selected by the Executive Committee, to the credit of This Association, or invested in U. S. Government Bonds at the discretion of the Executive Committee.

ARTICLE VII — Amendments

Amendments to this Constitution may be proposed by the Executive Committee, or by any two member societies. Proposed amendments shall be submitted to each of the member societies in writing. It shall require an affirmative vote of three-fourths of the member societies to ratify an amendment to this Constitution.

ARTICLE VIII — Later Affiliation

Non-member Geological Societies in the Gulf Coast Area which are affiliated with AAPG may petition the Executive Committee for membership and shall be accepted by an affirmative vote of three-fourths of the Executive Committee.

AMENDMENT I

Any member society may resign from This Association at any time by written notice to the Executive Committee. There shall be no obligation to transfer to such resigning society any portion of This Association's funds.

AMENDMENT II

This Association shall terminate at such time as a majority of the member societies shall so vote. Upon dissolution all funds and other property shall be divided equally among the member societies.

BY-LAWS

I. COMMITTEES:

The President, with the approval of the Executive Committee, shall appoint the Annual Meeting Chairman, and the following permanent committees:

- A. Publications
- B. Advertising
- C. Publicity

Appointment to these committees shall be for a term of one year.

1. Annual Meeting Chairman

The Annual Meeting Chairman shall direct the staging of the annual meeting, and shall have the authority to appoint such additional committees as he deems necessary.

2. Publications

The Publications Committee shall be responsible for obtaining papers for presentation at the annual meeting, and for editing and publishing the annual *Transactions*. It shall endeavor to stimulate geologists in the Gulf Coast to prepare papers which can be collected and published in the *Transactions*, symposium or other form in order to further the object of This Association as set forth in Article II of the Constitution. This committee shall be composed of one member from each of the affiliated societies.

3. Advertising

The Advertising Committee shall be responsible for obtaining advertisements in the publications of This Association, as directed by the Executive Committee. This committee shall be composed of one member from each of the member societies.

4. Publicity

The Publicity Committee shall be responsible for obtaining maximum national and local publicity of the activities of This Association. Also it shall be the responsibility of this committee to stimulate interest and participation in association affairs. The Executive Committee, shall function as the Publicity Committee.

The President, with the approval of the Executive Committee, may appoint such additional committees as are necessary to conduct the business of This Association.

II. TREASURER:

The Treasurer shall have the authority to issue checks against the Bank account of This Association on his sole signature, but in the event of his absence or incapacity to act, withdrawals or payments by check may be made on the signature of the President during the continuance of the absence, or incapacity, of the Treasurer. In this event, the identity and authority of the President, and the circumstances relating to the absence or incapacity of the Treasurer shall be certified by the Executive Committee, if so required by the depository. The Treasurer shall submit a financial report at each meeting of the Executive Committee and shall keep a set of books in accordance with good accounting practices. He shall submit the books for auditing at the end of his term of office.

The Treasurer shall keep an inventory, and storage record, of back publications and equipment owned by This Association. The office of Treasurer shall be bonded as directed by the Executive Committee.

III. These By-Laws may be amended by an affirmative vote of three-fourths of the Executive Committee.

IV. There shall be no dues.

**PUBLICATIONS
OF THE
GULF COAST SECTION—SEPM**

Type Localities of the Gulf Coast

Units I, II, and III Description (each)	\$0.50
--	--------

Field Trip Guidebooks

1961 - Middle Eocene, Houston County, Texas	\$1.50
1962 - Little Stave Creek—Salt Mountain Limestone, Jackson, Alabama	out of print
1963 - Guidebook; Stratigraphic Study of Pleistocene to Middle Eocene, Houston, Texas	\$1.50
1969 - Late Cenozoic Stratigraphy of Southwest Florida	out of print
1969 - Geologic Guidebook to Neogene Sections in Jamaica, West Indies	\$1.00
1973 - Proceedings of Symposium on Calcareous Nannofossils	\$3.00

*Order from R. P. Zingula, c/o Exxon Company, USA
Room 2295, P. O. Box 2180
Houston, Texas 77001*

Members are entitled to a 20% discount.
Include Sales Tax—Texas 5%; Louisiana 5%.
All foreign orders, add \$1.00 per volume.

PUBLICATIONS OF THE GULF COAST ASSOCIATION OF GEOLOGICAL SOCIETIES

Following is a list of available publications of the GCAGS. They may be ordered from Cambre Geological Services, Inc., 1809 Louisiana St., Houston, Texas 77002.

TRANSACTIONS

*Volume 1 (1951) New Orleans	
Volume 2 (1952) Corpus Christi	\$ 7.00
Volume 3 (1953) Shreveport	\$ 7.00
Volume 4 (1954) Houston	\$ 7.00
Volume 5 (1955) Biloxi	\$ 7.00
*Volume 6 (1956) San Antonio	
Volume 7 (1957) New Orleans	\$ 9.00
*Volume 8 (1958) Corpus Christi	
Volume 9 (1959) Houston	\$ 9.00
Volume 10 (1960) Biloxi	\$ 9.00
Volume 11 (1961) San Antonio	\$ 9.00
Volume 12 (1962) New Orleans	\$ 9.00
Volume 13 (1963) Shreveport	\$ 9.00
*Volume 14 (1964) Corpus Christi	
Volume 15 (1965) Houston	\$ 9.00
Volume 16 (1966) Lafayette	\$ 9.00
Volume 17 (1967) San Antonio	\$11.00
Volume 18 (1968) Jackson	\$11.00
Volume 19 (1969) Miami	\$12.00
Volume 20 (1970) Shreveport	\$12.00
Volume 21 (1971) New Orleans	\$13.00
Volume 22 (1972) Corpus Christi	\$13.00
Volume 23 (1973) Houston	\$13.00
Volume 24 (1974) Lafayette	\$15.00
Volume 25 (1975) Jackson	\$17.50

Index (1951-65) Comprehensive Index of GCAGS

Publications

\$ 1.50

Bibliography of Gulf Coast Geology (1970) 2 vol. set

\$ 9.50

Fault and Salt Map of South Louisiana 52" x 106" edited by

M. E. Wallace, Jr. (1966)

folded \$ 8.00

rolled \$ 9.00

Bathymetry of the Gulf of Mexico, Map by

Elazar Uchupi (1967)

\$ 1.50

Lower Wilcox Depositional System, Texas, Map, pp. 106-107,

Vol. 17 (1967)

\$ 1.50

Padre Island National Seashore Guidebook (1972)

\$ 4.75

Include Sales Tax — Texas 5%

— Louisiana 5%

All Foreign orders add \$1.00/volume

ALL ORDERS MUST BE PREPAID (EXCEPT STANDING ORDERS)

**Volumes 1, 6, 8 and 14 are out of print.*

Tectonic Map of the Gulf Coast (1972)

(Members) \$7.50

(Non-members) \$9.00

Order Tectonic Map from AAPG, P. O. Box 979, Tulsa, Oklahoma 74101